

Ministry of Education & Human Resource Development
Vocational Training & National Excellence

Grade 6
National Assessment
June 1, 2023

TIME: 75 Minutes

DO NOT TAKE THIS PAPER OUT OF THE EXAMINATION ROOM

©CMEU/2023

Social Sciences

SOCIAL SCIENCES EXAMINATION

1HR 15 MINUTES

READ THE FOLLOWING INSTRUCTIONS BEFORE ATTEMPTING THE TEST.

1. THIS PAPER CONTAINS 50 QUESTIONS.
2. FOR EACH QUESTION, CIRCLE THE LETTER ON THE ANSWER SHEET THAT MATCHES THE ANSWER YOU HAVE CHOSEN.
3. USE A PENCIL TO SHADE IN THE CORRECT ANSWER.

EXAMPLE:

1. Which of these is a primary product?

- A. soap
- B. pasta
- C. banana
- D. fertiliser

The correct answer is banana, letter C. On your answer sheet you mark:

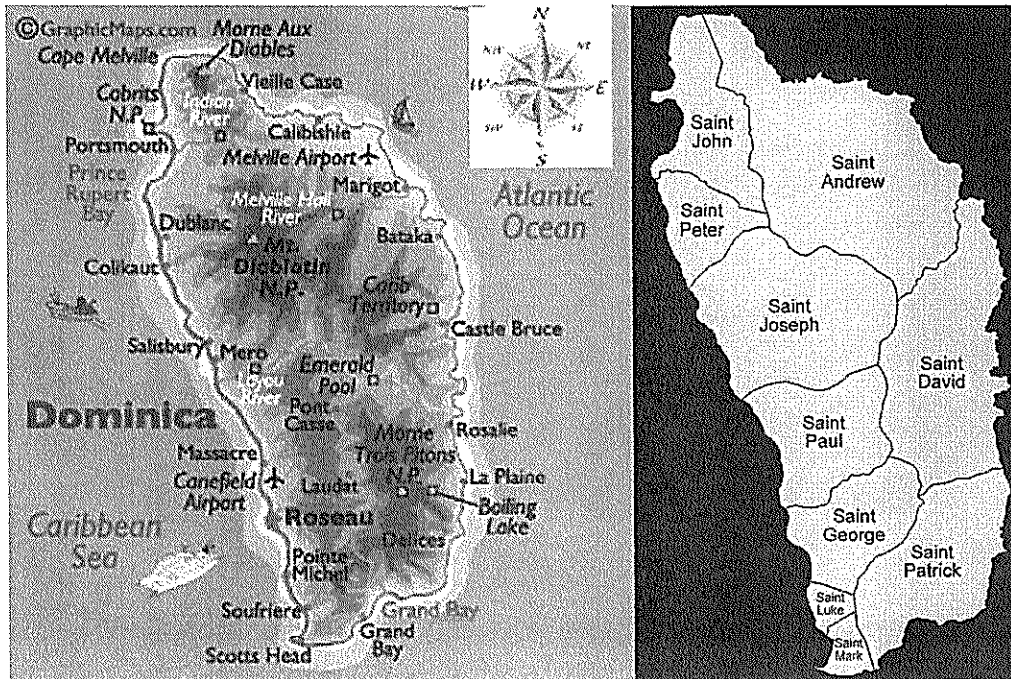
A. B. D

If you need to change your answer, erase it and circle your new answer

4. **IF YOU CANNOT ANSWER A QUESTION LEAVE IT AND MOVE ON TO THE NEXT ONE. YOU WILL COME BACK TO IT LATER IF YOU HAVE MORE TIME**

LOCATION, PEOPLE AND PLACES

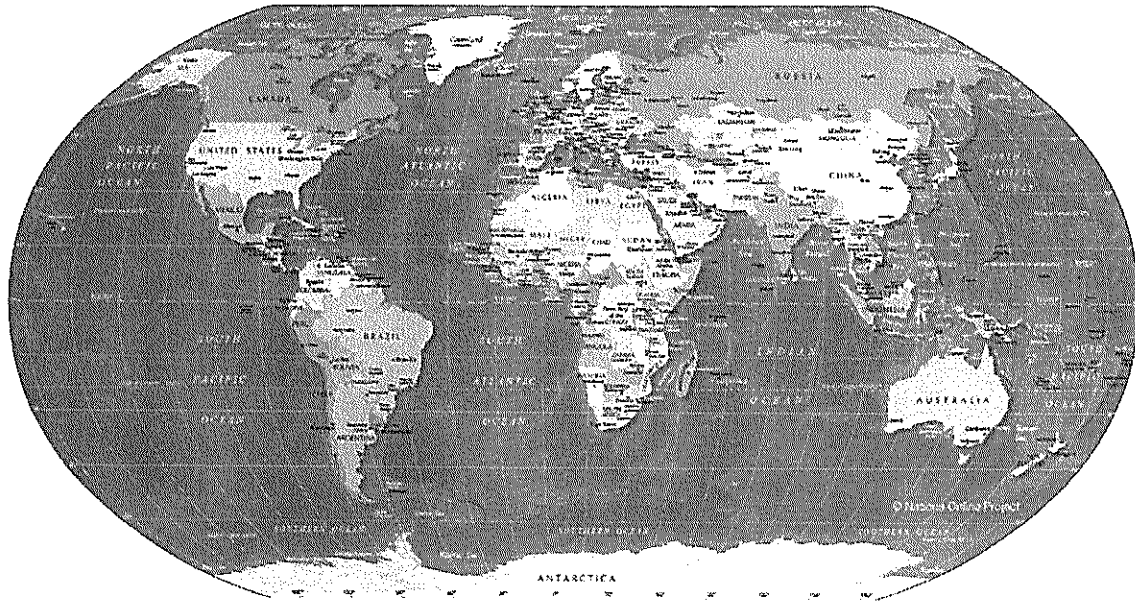
Study the maps below and use it to answer questions 1 and 2



1. Which of these will you find in the parish of St. Andrew?
 - A. Douglas Charles Airport
 - B. Boiling Lake
 - C. Cabrits National Park
 - D. Morne Diablotin

2. Hanna lives in a village in the South-East. In which of the villages would you find Hanna's home?
 - A. Grandbay
 - B. Pointe Michel
 - C. Laplaine
 - D. Colihaut

Use the map below to answer questions 3 to 5.



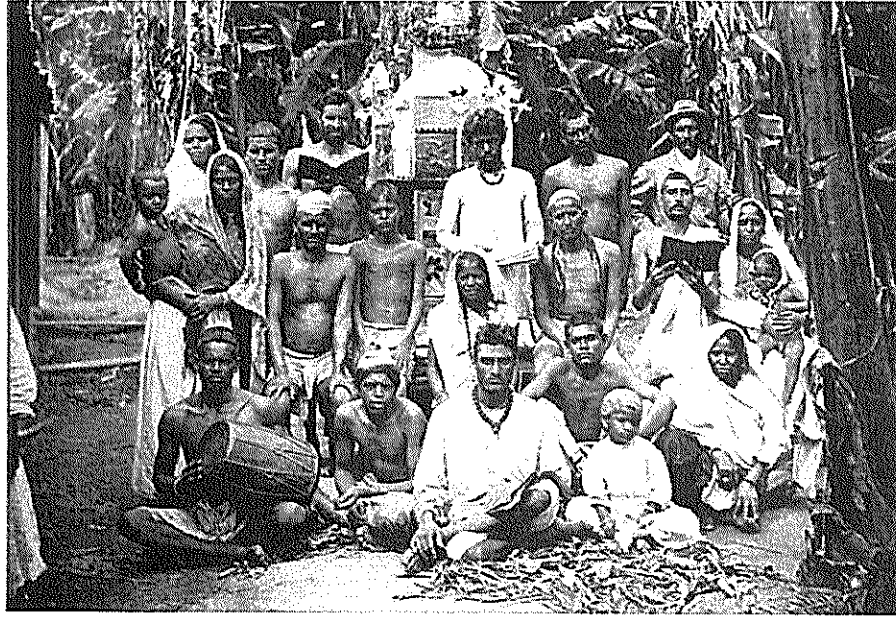
3. The Caribbean Region is located between which two continents?
 - A. South America and Africa
 - B. Asia and Europe
 - C. North America and Canada
 - D. North America and South America

4. Which is the largest continent?
 - A. Asia
 - B. Africa
 - C. Europe
 - D. North America

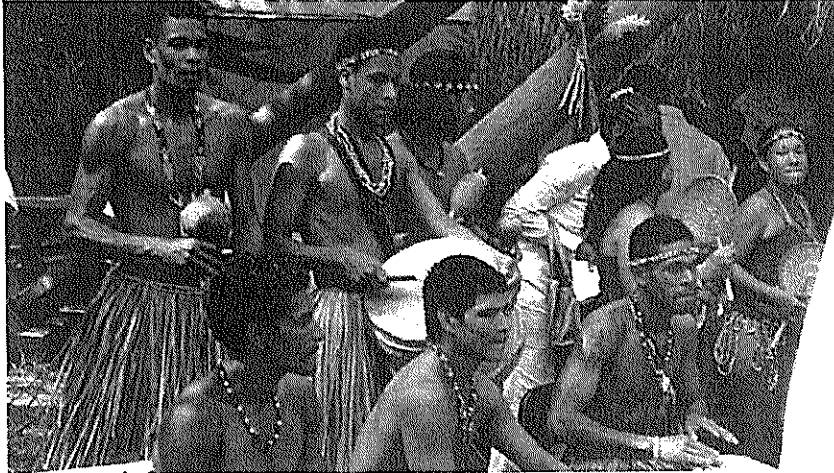
5. Which body of water separates the Caribbean from Europe?
 - A. the Caribbean Sea
 - B. the Pacific Ocean
 - C. the Indian Ocean
 - D. the Atlantic Ocean



6. The dance portrayed above most likely came from the
- A. Europeans
 - B. Africans
 - C. Americans
 - D. Caribs
7. This group of people was the first to settle in the caribbean
- A. Europeans
 - B. French
 - C. Africans
 - D. Amerindians



8. This group of people came to the Caribbean mainly as
- A. Slaves
 - B. slave masters
 - C. indentured servants
 - D. tourists
9. The Caribbean region is located in the tropical zone. Which of these is least likely to happen in this zone?
- A. snowstorms
 - B. hurricanes
 - C. tsunamis
 - D. volcanic eruption



10. The group of people portrayed above will **most likely** be found in
- A. Mahaut
 - B. Portsmouth
 - C. Grandbay
 - D. Sineku

CIVIC IDEAL AND PRACTICES

11. Dr. Alwin Bully is remembered for all of the following **EXCEPT**
- A. Carnival Costume Design
 - B. Caribbean Cultural Designer for UNESCO
 - C. Fighting for the Rights of Employees
 - D. Playwright



12. The Neg Mawon Monument represents
- A. a symbol of freedom and emancipation from slavery.
 - B. the artwork of a local dominican.
 - C. the people who live on the island.
 - D. the site of a slavery revolution.
13. Which three day event is celebrated around independence time?
- A. Jazz and Creole Festival
 - B. Cultural Gala
 - C. World Creole Music Festival
 - D. Creole in the Park
14. The branch of government responsible for ensuring that Dominican laws are enforced is the
- A. legislative
 - B. judiciary
 - C. cabinet
 - D. opposition

15. L.M. Christian is known for (changed)
- A. designing the National Flag
 - B. designing the Coat of Arms
 - C. composing the words of the National Anthem
 - D. writing the musical arrangements for the the National Anthem
16. What document guarantees the rights of all citizens in Dominica?
- A. Constitution
 - B. Student handbook
 - C. Declaration of Independence
 - D. Education Act
17. What is the leadership style that considers the views, opinions and ideas of others?
- A. Laissez-faire
 - B. People-oriented
 - C. Democratic
 - D. Autocratic
18. Which is a Caribbean leader?
- A. Joe Biden
 - B. Andrew Holness
 - C. Justin Trudeau
 - D. Vladimir Putin

19. John usually plays cricket with his friends after school. What type of group is best portrayed by the picture below?



- A. peer group
 - B. sports group
 - C. formal group
 - D. voluntary group
20. Which country would likely have sent athletes to participate in the ALBA Games recently held in Venezuela?
- A. St. Martin
 - B. Cuba
 - C. Bahamas
 - D. Belize
21. Which statement best suggests why Dominica's official language is English?
- A. Britain was the last country to govern Dominica
 - B. Dominican population prefer to speak the English language
 - C. Many Englishmen still live there
 - D. Dominica became independent in 1978

22. Which of these organizations in Dominica is responsible for purchasing and exporting local agricultural products?
- A. DHTA
 - B. DAT
 - C. DEXIA
 - D. PWA

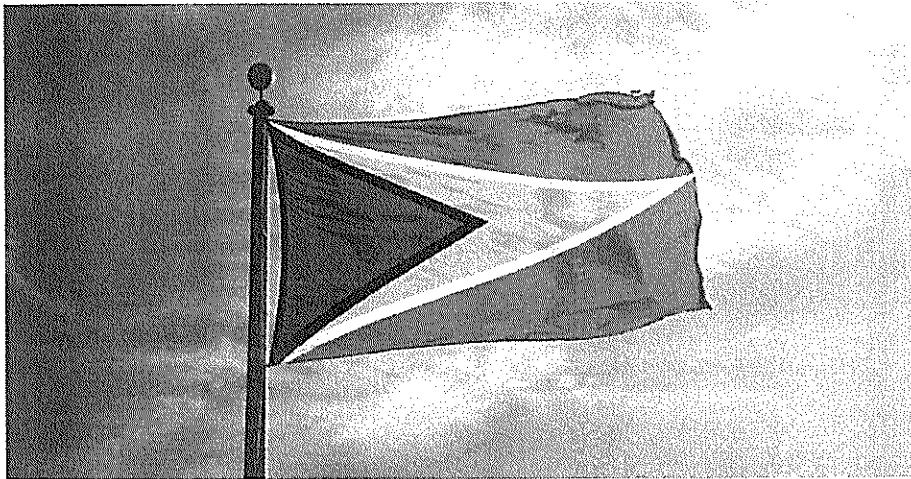


23. In some Caribbean Islands, Carnival is celebrated on Monday and Tuesday before
- A. Holy Thursday
 - B. Ash Wednesday
 - C. Good Friday
 - D. Easter Sunday
24. The President of Dominica
- A. stays in office for as long as he is able to
 - B. is elected every 4 years
 - C. is elected by the House of Assembly
 - D. is elected by the people of the country
25. Which is a responsibility you have at home?
- A. watching TV
 - B. cleaning your bedroom
 - C. going to school
 - D. paying taxes

26. The minister of finance in Dominica is

- A. Hon. Dr Roosevelt Skerrit
- B. Hon. Fidel Grant
- C. Hon. Roland Royer
- D. Hon. Dr. Irvin MacIntyre

27. The flag shown below belongs to which island?



- A. Jamaica
- B. Trinidad and Tobago
- C. Guyana
- D. St. Lucia

28. Dominica belongs to all of these organizations **EXCEPT**

- A. OECS
- B. CARICOM
- C. OAS
- D. NATO

RESOURCES

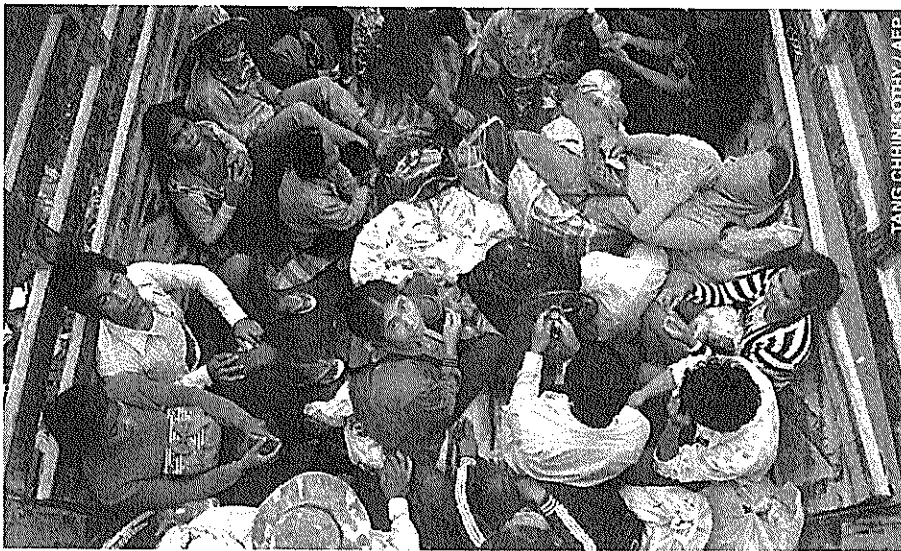
29. Materials that are used over and over again are
- A. wasted.
 - B. recycled.
 - C. decayed.
 - D. manufactured.
30. Dominica's Geothermal project is meant to produce
- A. electricity
 - B. cleaner water
 - C. more fertile soil
 - D. gasoline
31. Which of the following is an example of a **secondary industry**?
- A. quarrying stones
 - B. cultivating bananas
 - C. catching fish
 - D. processing wheat
32. Sam exports plantains to Trinidad every week. In what type of trade is he involved?
- A. internal
 - B. local
 - C. regional
 - D. international
33. The Eastern Caribbean Central Bank is responsible for issuing currency to all of the following islands **EXCEPT**
- A. Antigua
 - B. Barbados
 - C. Grenada
 - D. St. Kitts

34. An Eco-tourist to Dominica is likely to visit all of the following **EXCEPT**
- A. Fort Shirley
 - B. Botanic Gardens
 - C. Waitukubuli National Trails
 - D. Rosalie Bay Sea Turtle Nesting
35. How can we reduce the impact of air pollution?
- A. Stop producing cars.
 - B. Wear facemasks if we live in the cities.
 - C. Move to the countryside.
 - D. Walk instead of taking the bus.
36. The process of using resources wisely is called
- A. sustainability
 - B. overuse
 - C. manufacturing
 - D. non-pollutant
37. The care and protection of resources so that they can continue to exist for future generations is known as
- A. saving
 - B. conservation
 - C. deforestation
 - D. recycling
38. Why should we protect the corals in the sea?
- A. They provide homes for marine animals.
 - B. They look pretty.
 - C. Boats use them as anchors.
 - D. Fishermen can use them as bait.

39. What is the main reason for the hunting season in Dominica?
- A. To provide the government with money.
 - B. To provide recreation for hunters.
 - C. To attract tourists.
 - D. To preserve our wildlife.
40. From which of these resources do we get paper?
- A. Bauxite
 - B. Limestone
 - C. Forests
 - D. Corals

SOCIAL ISSUES AND CHANGE

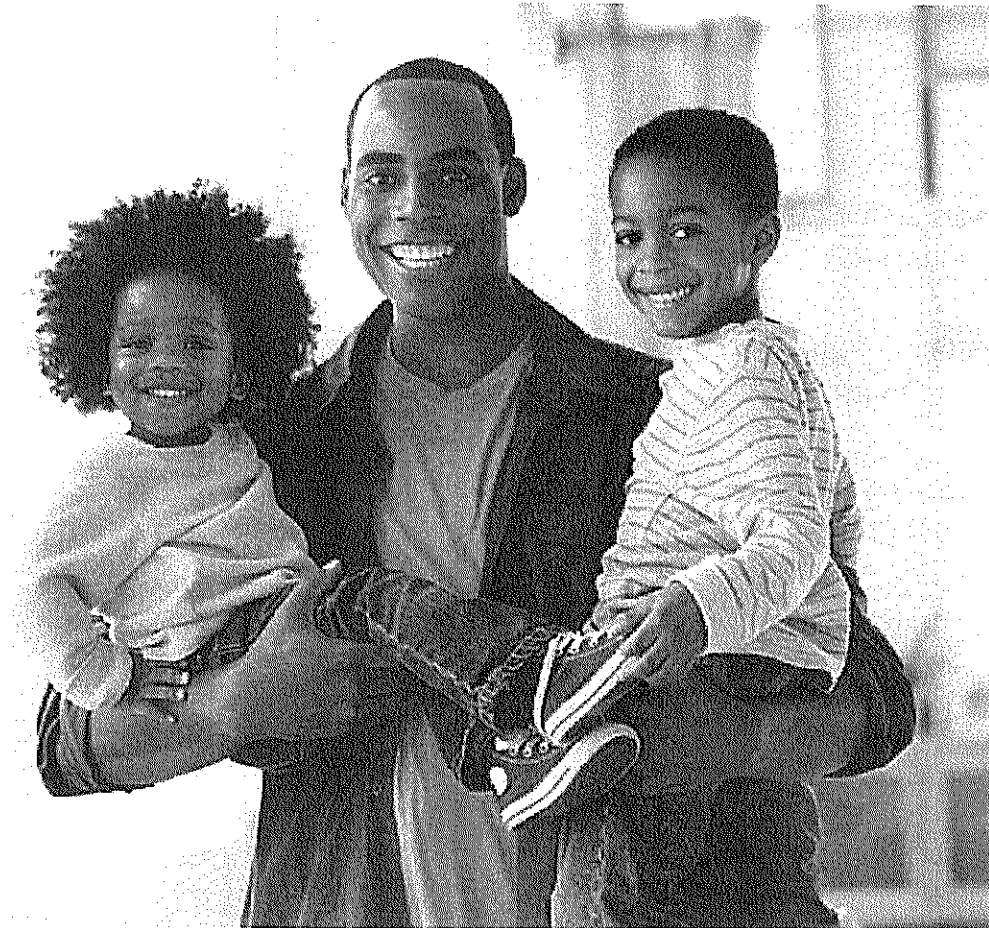
Use the picture below to answer questions 41 and 42



41. The picture above represents which social issue?
- A. Human Trafficking
 - B. Poverty
 - C. Refugees
 - D. Homelessness

42. The people in the picture above will most likely face the following problems EXCEPT
- A. end up on the streets begging
 - B. work as slaves
 - C. be adopted by a charitable organization
 - D. suffer from depression
43. The site for the building of the International Airport is in the village of
- A. Woodfordhill
 - B. Wesley
 - C. Marigot
 - D. Calibishie
44. Which of these countries will David require a visa to travel to as a Dominican citizen
- A. Cuba
 - B. Haiti
 - C. Jamaica
 - D. France

Use the picture below to answer questions 45 and 46



45. The above family may result from all of the following **EXCEPT**
- A. Death of one parent
 - B. Divorce of parents
 - C. One parent goes on vacation
 - D. Desertion of one parent
46. All of these are problems single parents families face **EXCEPT**
- A. Children may become delinquent
 - B. Children develop responsibility at an early age
 - C. Difficulty meeting basic needs
 - D. Children drop out of school at an early age

47. Mr. Williams, who lives in Dominica, is traveling to Florida to visit his brother. He wants to bring his brother some ground provisions. To which officer should he go to get a permit to carry the items?
- A. Custom officer
 - B. Immigration Officer
 - C. Baggage handler
 - D. Quarantine Officer
48. Mr. Johnson, who lives in the U.S, wants to send money urgently to his mother in Dominica. Which of these services should he utilize?
- A. Western Union
 - B. Bank draft
 - C. DHL
 - D. E-mail
49. Which of the following has the greatest impact on how children socialize nowadays?
- A. The increase in social media app
 - B. The time children go to bed
 - C. The number of sporting facilities built by the government
 - D. The subjects taught at school
50. You are a witness to a vehicle accident where people you knew were bleeding. what is the best and most appropriate thing to do?
- A. post it to Facebook so people would be able to identify their family members
 - B. call an online news outlet to get the news across fast
 - C. take your cell phone to record and share
 - D. call the police even though other people have already called

END OF EXAMINATION

✓ 9

3 8

✓ 0

0

