

*Ministry of Education & Human Resource Development  
Vocational Training & National Excellence  
Dominica*

*Grade 6  
National Assessment  
June 2, 2023*

**TIME: 75 Minutes**

**DO NOT TAKE THIS PAPER OUT OF THE EXAMINATION ROOM**

©CMEU/2023

*Science and Technology*

# MINISTRY OF EDUCATION AND HUMAN RESOURCE DEVELOPMENT.

## INSTRUCTIONS

READ THE FOLLOWING INSTRUCTIONS BEFORE ATTEMPTING THE TEST.

1. THIS PAPER CONTAINS 50 QUESTIONS.
2. FOR EACH QUESTION, CIRCLE THE LETTER ON THE ANSWER SHEET THAT MATCHES THE ANSWER YOU HAVE CHOSEN.
3. USE A PENCIL TO SHADE IN THE CORRECT ANSWER.

### EXAMPLE:

1. Which object is most likely to float in a container of water?

- A. leaf
- B. key
- C. pen
- D. coin

The correct answer is leaf, letter A. on your answer sheet you mark:



B.

C.

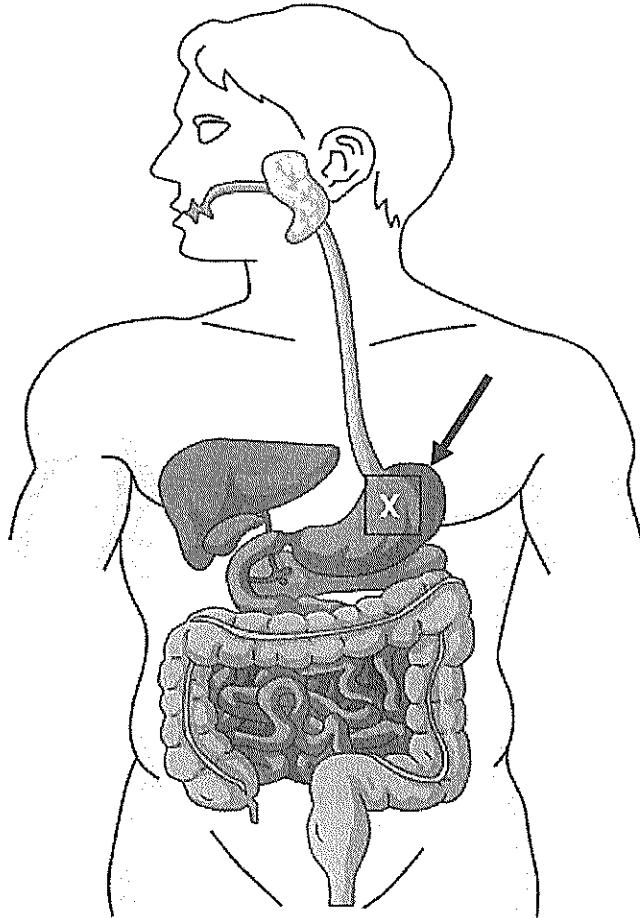
D

If you need to change your answer, erase it and circle your new answer.

4. If you cannot answer a question leave it and move on to the next one. You will come back to it later if you have more time.

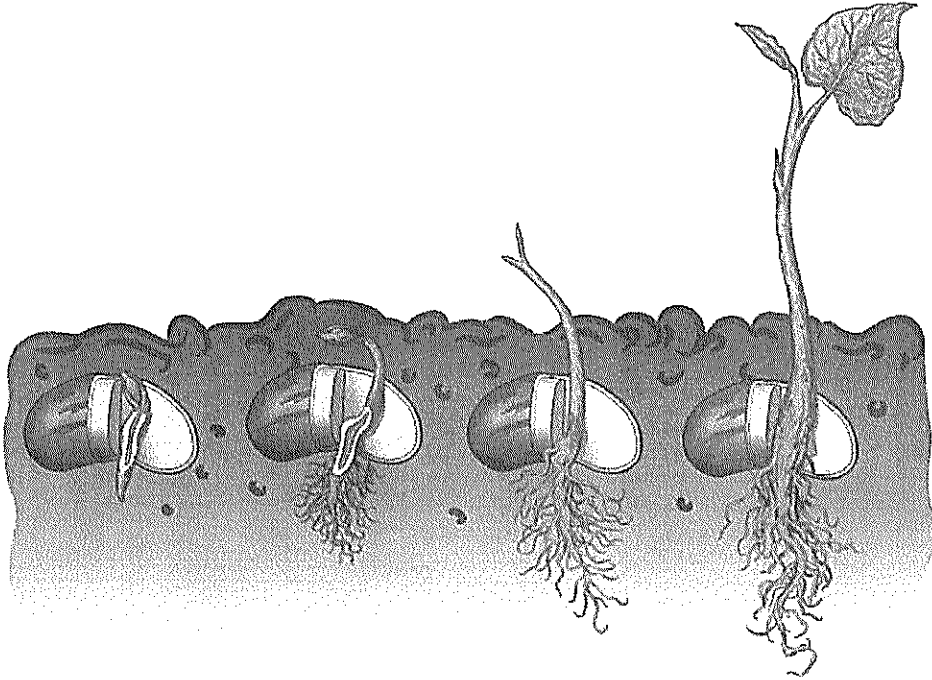
## Life Science

Study the diagram below and use it to answer questions 1 – 2



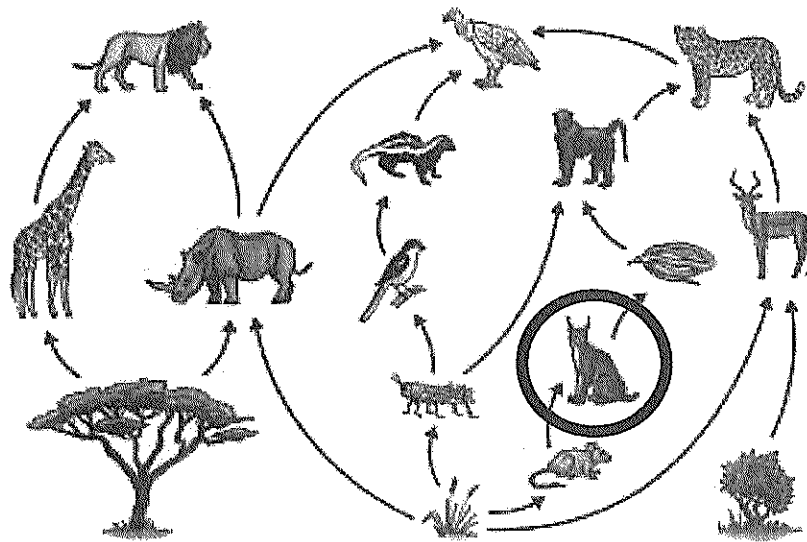
1. What function does this system perform?
  - A. Digestion of food
  - B. Cleansing of air
  - C. Extraction of urine
  - D. Getting rid of all wastes
2. What is the name of the part labelled X
  - A. Liver
  - B. Appendix
  - C. Pancreas

- D. Stomach
3. In which body system would you find the **trachea**?
- A. Digestive
  - B. Respiratory
  - C. Excretory
  - D. Muscular
4. The spinal cord is protected by the
- A. skull
  - B. ribs
  - C. pelvis
  - D. backbone
5. Children need to use deodorant as they grow older because of changes in their
- A. height
  - B. hair
  - C. body part
  - D. body odour
6. Which is the largest organ of the human body?
- A. The skin
  - B. The liver
  - C. The lungs
  - D. The stomach
7. Both plants and people are living things. Which one thing is NOT done by both?
- A. They grow and change
  - B. They manufacture their own food
  - C. They have young ones
  - D. They have a food system



8. Which of these is the function of the seed coat?
- A. It manufactures food
  - B. It protects the embryo
  - C. It transports minerals
  - D. It holds up the new leaves
9. Where does a young plant get food when it is just beginning to grow?
- A. From the stem
  - B. From the soil
  - C. From the root
  - D. From the seed
10. In which of the following ways are bees useful to plants?
- A. They take the excess foods that plants make.
  - B. They help plants make their flowers bright
  - C. They help spread pollen from the plants.
  - D. They help keep pests away from plants.

Study the image below and answer questions 11 - 13

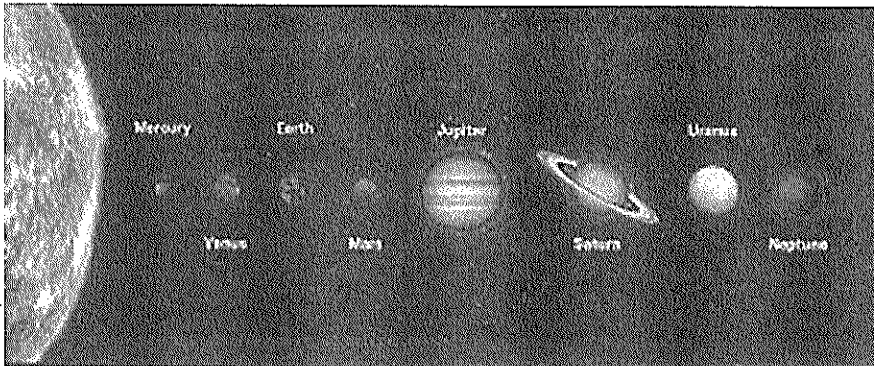


11. The diagram above is an example of a
  - A. Food chain
  - B. Life cycle
  - C. Habitat
  - D. Food web
  
12. Which organism makes its own energy and starts a food chain or web?
  - A. The producer
  - B. The herbivore
  - C. The primary consumer
  - D. The decomposer
  
13. What is most likely to happen if all the red foxes (the animal that is circled) die?
  - A. The rat population would decrease
  - B. The rat population would increase
  - C. The grasshoppers would also die
  - D. The number of snakes would increase

14. A doctor has advised Jenny to add vitamin C to her diet. What should she eat more of?
- A. Oranges, Cherries
  - B. Bananas and pawpaw
  - C. Mangoes and apples
  - D. Grapes and pears
15. Which of these nutrients found in fruits and vegetables is good for you?
- A. Fats
  - B. Proteins
  - C. Fiber
  - D. Carbohydrates

### Earth and Space

Study the image below and use it to answer questions 16 – 18



16. A person who studies the planets is a/ an \_\_\_\_\_?
- A. Astronomer
  - B. Biologist
  - C. Weather Forecaster
  - D. Meteorologist
17. Which planet would take the longest time to revolve around the sun?
- A. Mercury
  - B. Neptune
  - C. Saturn
  - D. Uranus

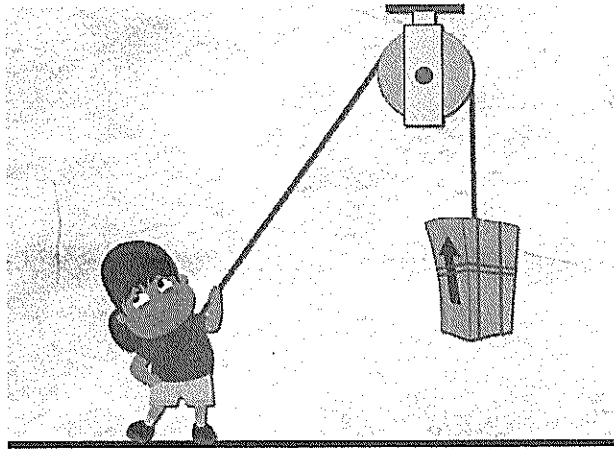
18. How long does it take for the earth to orbit the sun?
- A. 24 hours
  - B. 1 week
  - C. 1 month
  - D. 365 days
19. The average weather over a period of time is referred to as
- A. temperature
  - B. humidity
  - C. climate
  - D. meteorology
20. A scientist who studies and predicts weather is called a
- A. Botanist
  - B. Astronaut
  - C. Meteorologist
  - D. Forecaster
21. The process in the water cycle where water clouds are formed is known as
- A. condensation
  - B. evaporation
  - C. precipitation
  - D. rain
22. Which of the following would be considered Dominica's most important resource?
- A. Rivers
  - B. Sand
  - C. Coal
  - D. Crude oil
23. Which of these is used to make plastic?
- A. Trees
  - B. Petroleum
  - C. Ore
  - D. Bauxite

24. One way of making polluted water clean is by
- A. filtering it
  - B. boiling it
  - C. adding disinfectant
  - D. straining it
25. All of the following are non-renewable resources except
- A. metals
  - B. solar energy
  - C. oil
  - D. natural gas

### Physical Science

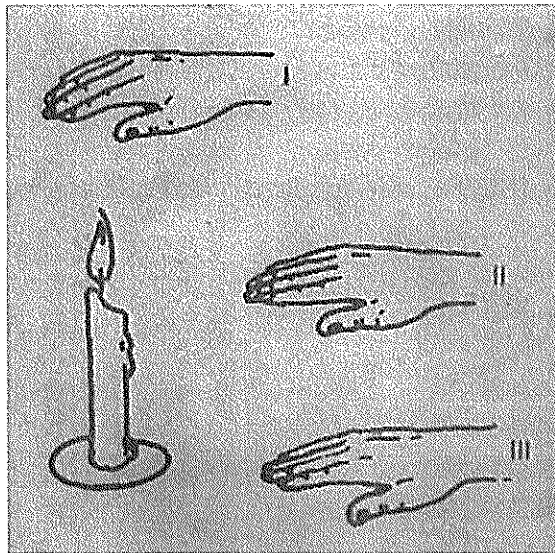
26. Gravity is best described as
- A. A force that keeps things apart
  - B. A force that brings things together
  - C. A force that pulls things towards the earth
  - D. A force that allows airplanes to stay in the air
27. You know that a force has NOT been applied to an object when it
- A. moves
  - B. stops
  - C. changes shape
  - D. remains still
28. Friction is a force that resists motion. You will find the **MOST** friction while pushing a block across what type of floor?
- A. Tiled
  - B. Wooden
  - C. Unpaved
  - D. Carpeted

29. A simple machine made using a wheel and a rope around it is called a



- A. lever
- B. pulley
- C. wheel and axle
- D. wedge

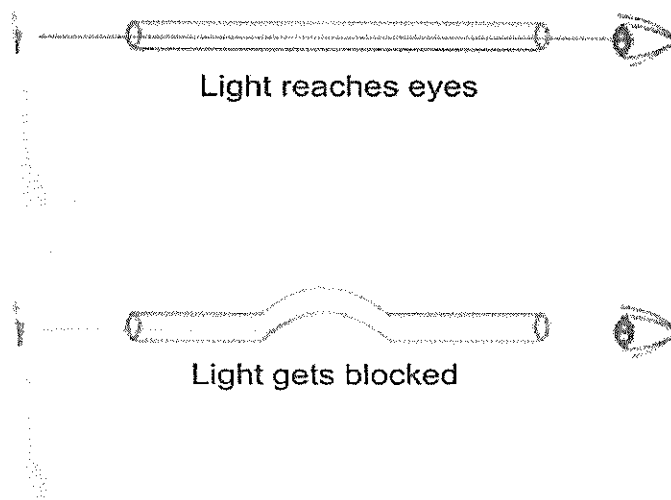
30. The diagram below shows a lighted candle. Your hand feels hotter if you hold it at I than at II or III. The reason for this is



- A. hot air spreads
- B. hot air rises
- C. heat travels by conduction
- D. heat travels mainly by radiation

31. Which of these would a fire need to keep burning?
- A. Carbon dioxide
  - B. Carbon monoxide
  - C. Hydrogen
  - D. Oxygen
32. Which of the following statements is **INCORRECT**?
- A. Heating makes most solids, liquids and gases expand
  - B. Cooling makes most solids, liquids and gases contract
  - C. When gases or liquids expand they become heavier
  - D. Heating makes some liquids change to gases
33. When objects vibrate they make
- A. Noise
  - B. Music
  - C. Pitch
  - D. Sound

Look at the diagram below.

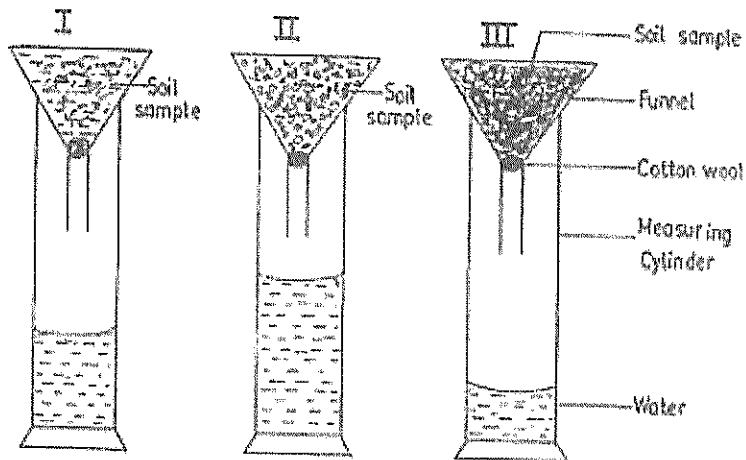


34. What does the image try to prove?
- A. Straws are flexible
  - B. We can only see some light
  - C. Light travels in a straight line
  - D. The light went out before it got to the eyes

35. An object that does not allow light to pass through it is
- A. Transparent
  - B. Opaque
  - C. Translucent
  - D. Invisible
36. In which of these are the particles furthest apart?
- A. Orange juice
  - B. Air
  - C. Water
  - D. Stone
37. Which is the best explanation for ice melting?
- A. It was not in a container.
  - B. It was not properly frozen.
  - C. The weather was hot.
  - D. The fridge was not working properly.
38. If you leave a chocolate bar on the desk in your classroom on a hot day. In which type of container should you put the chocolate bar so it will melt the slowest?
- A. a plastic container
  - B. a non insulated container
  - C. an insulated container
  - D. a metal container
39. The amount of space an object takes up is its
- A. height
  - B. mass
  - C. volume
  - D. density
40. When gas particles turn into water particles, what has happened?
- A. solution
  - B. vaporization
  - C. mixation
  - D. condensation

## Agricultural Science

Miss Murray set up 2 test tubes with some soil samples, loam, sand and clay, as shown below.



She placed some equal amounts of soil samples in each funnel and poured the same amount of water over each sample.

41. Which of the funnels contained clay?
- A. I
  - B. II
  - C. III
  - D. I and III
42. Which soil type would be best suited for planting lettuce?
- A. I
  - B. II
  - C. III
  - D. I and II
43. Which of the following does not store food in its roots?
- A. Carrot
  - B. Turnip
  - C. Sweet potato
  - D. Cabbage

44. We eat the stems of all the following **EXCEPT**

- A. Corn
- B. Sugar cane
- C. Celery
- D. Callaloo

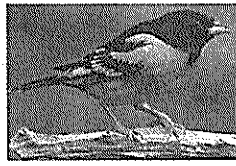
45. Which of these best describes a compost?

- A. a place to dispose all of your garbage
- B. decomposed organic material leaves, twigs, and kitchen scraps from plants
- C. fertilizer bought in the store to put around plants
- D. food wastes from the kitchen used to feed to animals

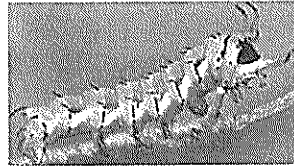
46. Which of the following would be the **LEAST USEFUL** to a farmer?



Earthworm



Bird



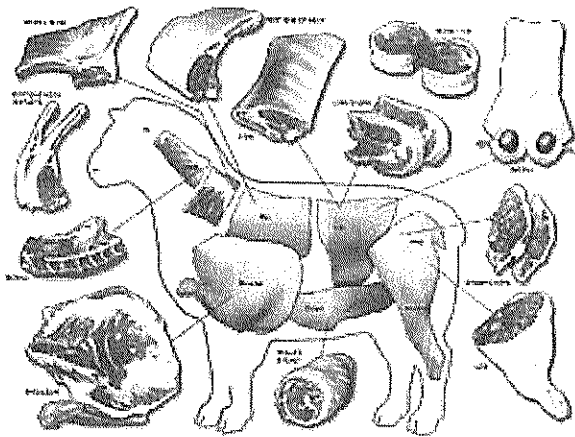
caterpillar



bee

- A. Bee
- B. Bird
- C. Caterpillar
- D. Earthworm

The diagram below shows the parts of a sheep. Use the diagram to answer questions 47 and 48.



47. What is meat from a sheep called?
- A. Beef
  - B. Ham
  - C. Bacon
  - D. Mutton
48. Which of these also comes from this animal?
- A. wool
  - B. bacon
  - C. pork
  - D. cotton
49. Which animal reproduces the fastest?
- A. Goat
  - B. Sheep
  - C. Rabbit
  - D. Cow
50. **Broilers** are chickens raised for
- A. meat
  - B. eggs
  - C. reproducing
  - D. barbeques

